

Windows 10 Clean Install

Windows 10 clean install step-by-step printable guide

In this tutorial, we will show you how to perform a clean installation of Windows 10. This method will install new Windows and remove everything from your PC.

To do this you will need:

- [Windows 10 installation USB](#)
- A PC that can boot from USB and is compatible with Windows 10

1. After you have created a bootable USB for installation you need to boot your computer from it. By using your computer's Boot Menu or BIOS/UEFI setup utility (by setting USB as the primary boot device).

2. If you set up the boot correctly the installer might prompt you to press any key to start the setup.

A screenshot of a black terminal window with white text. The text reads "Press any key to boot from CD or DVD._" with a cursor at the end of the line.

Press any key to boot from CD or DVD._

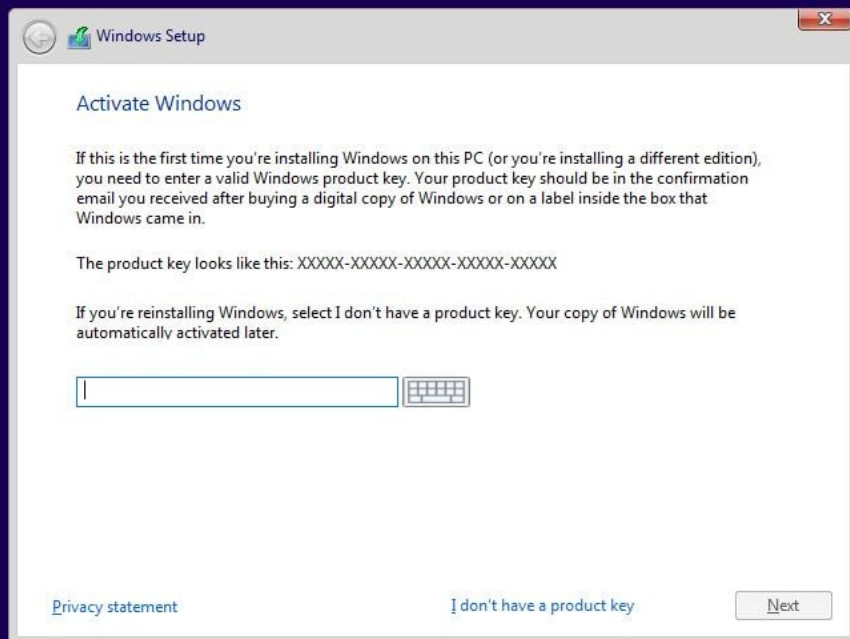
3. Select Language, Time and currency format and input method and press "Next".



4. Click "Install now".



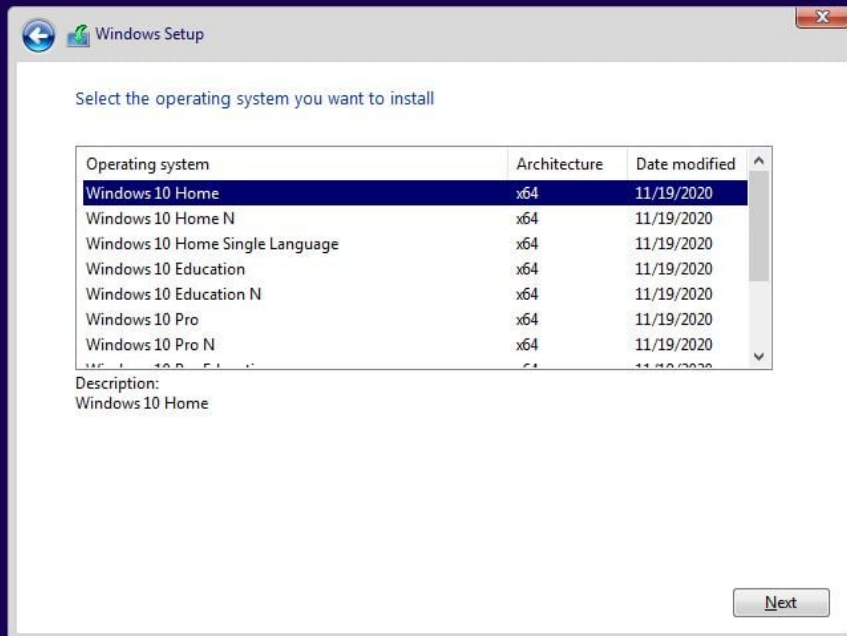
5. Enter your product key and click “Next”. If you want you can skip this step and enter the license later by clicking “I don’t have a product key” at the bottom. If you need a key right now, we sell budget priced, fully legal [recycled product license keys](#)

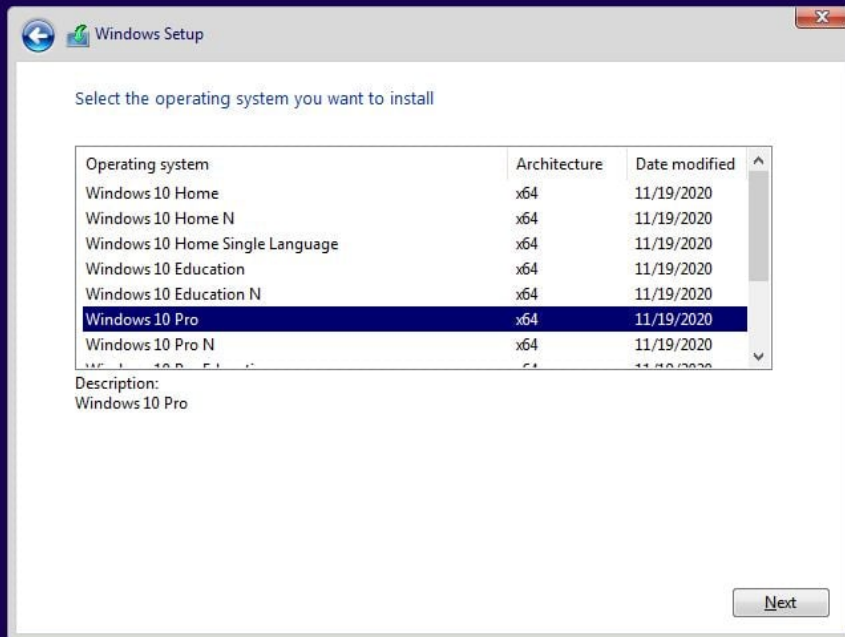


1 Collecting information

2 Installing Windows

6. If you have entered the license in the previous step please proceed with step 7. If you clicked on "I don't have a product key" you need to select the edition of Windows that you want to install. Keep in mind to select the proper version of Windows such as Home or Pro do not select any other version and click "Next".

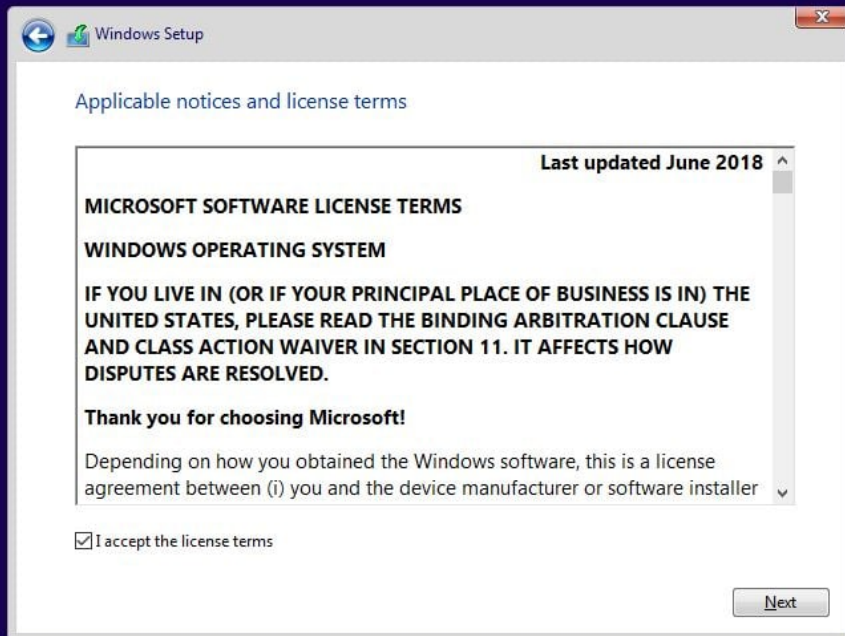




1 Collecting information

2 Installing Windows

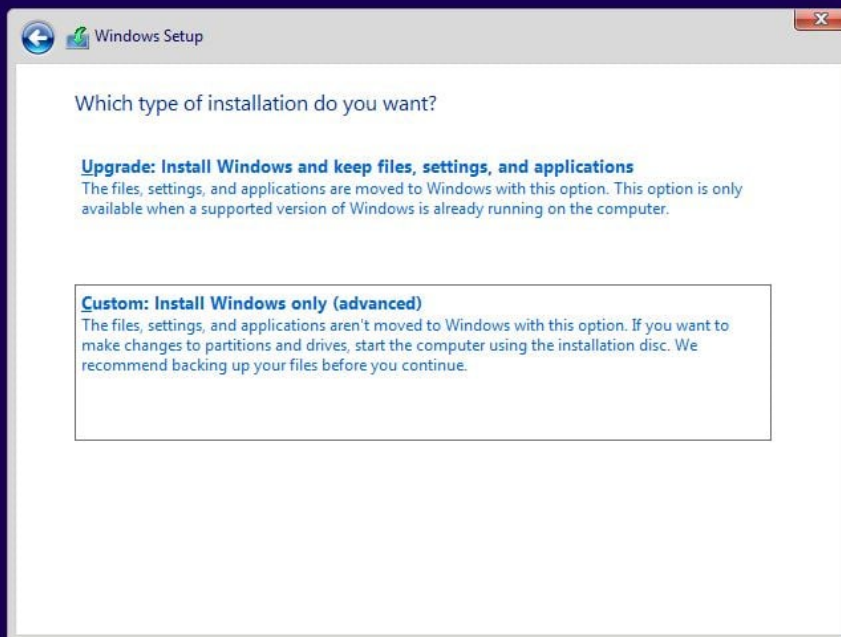
7. Now accept the license terms and click "Next".



1 Collecting information

2 Installing Windows

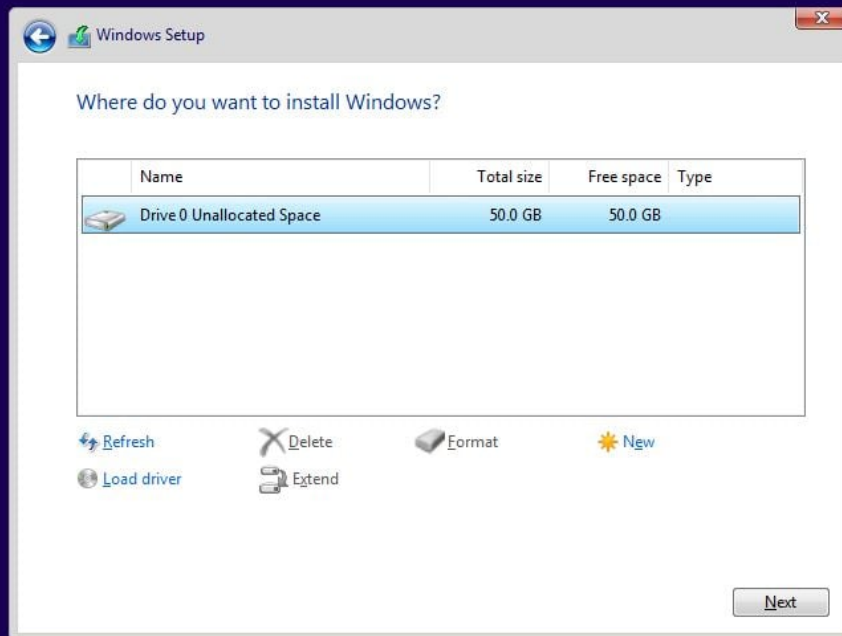
8. Because this is a Windows 10 clean install, not an upgrade, click on “Custom Install”.



1 Collecting information

2 Installing Windows

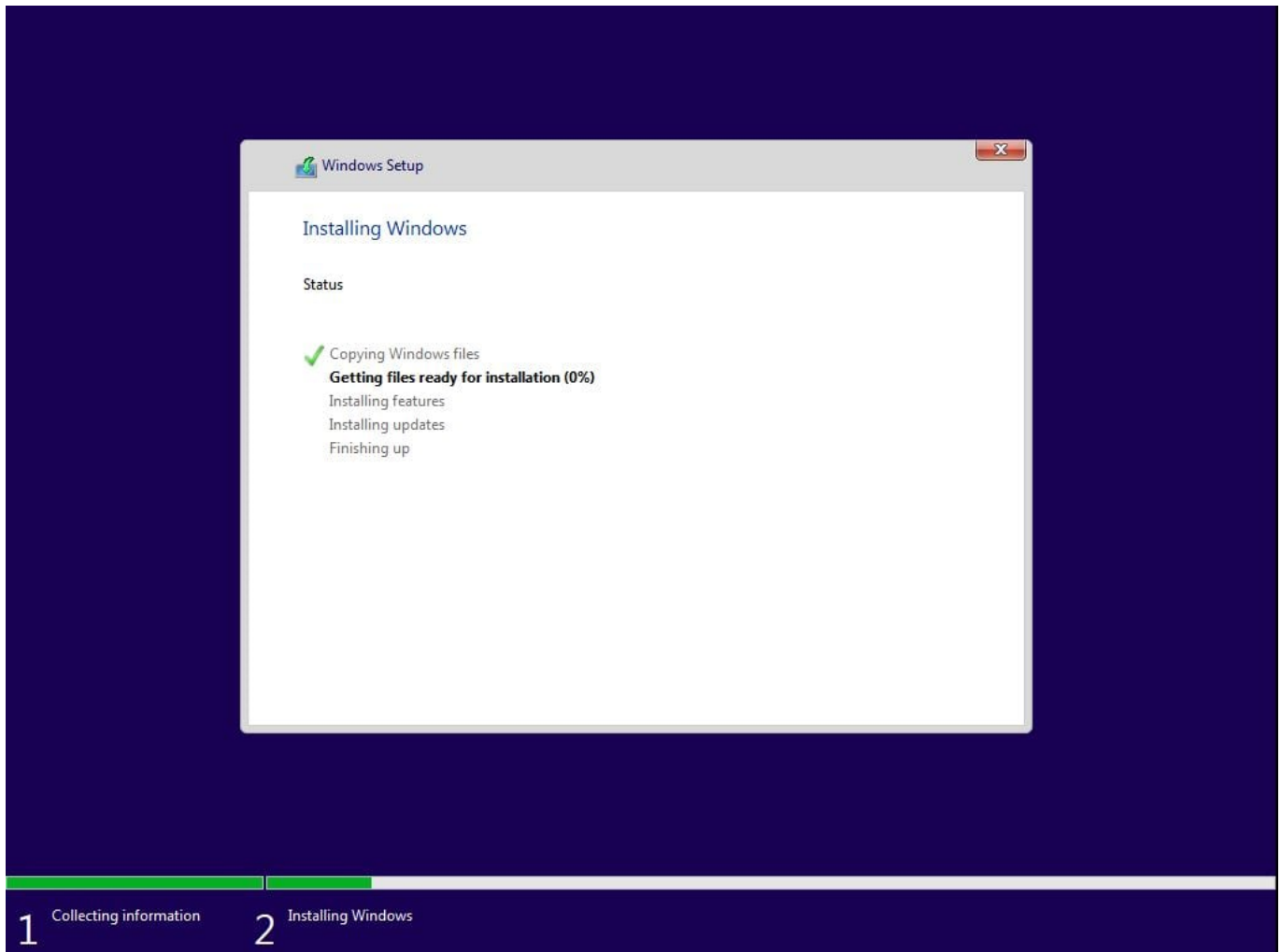
9. You will see a list of current partitions. You need to click on each partition and then click on "Delete" at the bottom. Once you delete all partitions you will be left only with "Drive 0 Unallocated Space", highlight it, and click "Next".



1 Collecting information

2 Installing Windows

10. The installation process will start. Please make sure that if you have a laptop it is plugged into the power source. Your computer will restart at least once during this process, also it might take a while depending on your computer processing power.



11. After reboot you will be welcomed by Cortana and will be asked to select your Country. Select it and click "Yes".

Let's start with region. Is this right?

U.S. Minor Outlying Islands

U.S. Virgin Islands

Uganda

Ukraine

United Arab Emirates

United Kingdom

United States

Yes



12. Select your keyboard layout and click "Yes".

Is this the right keyboard layout?

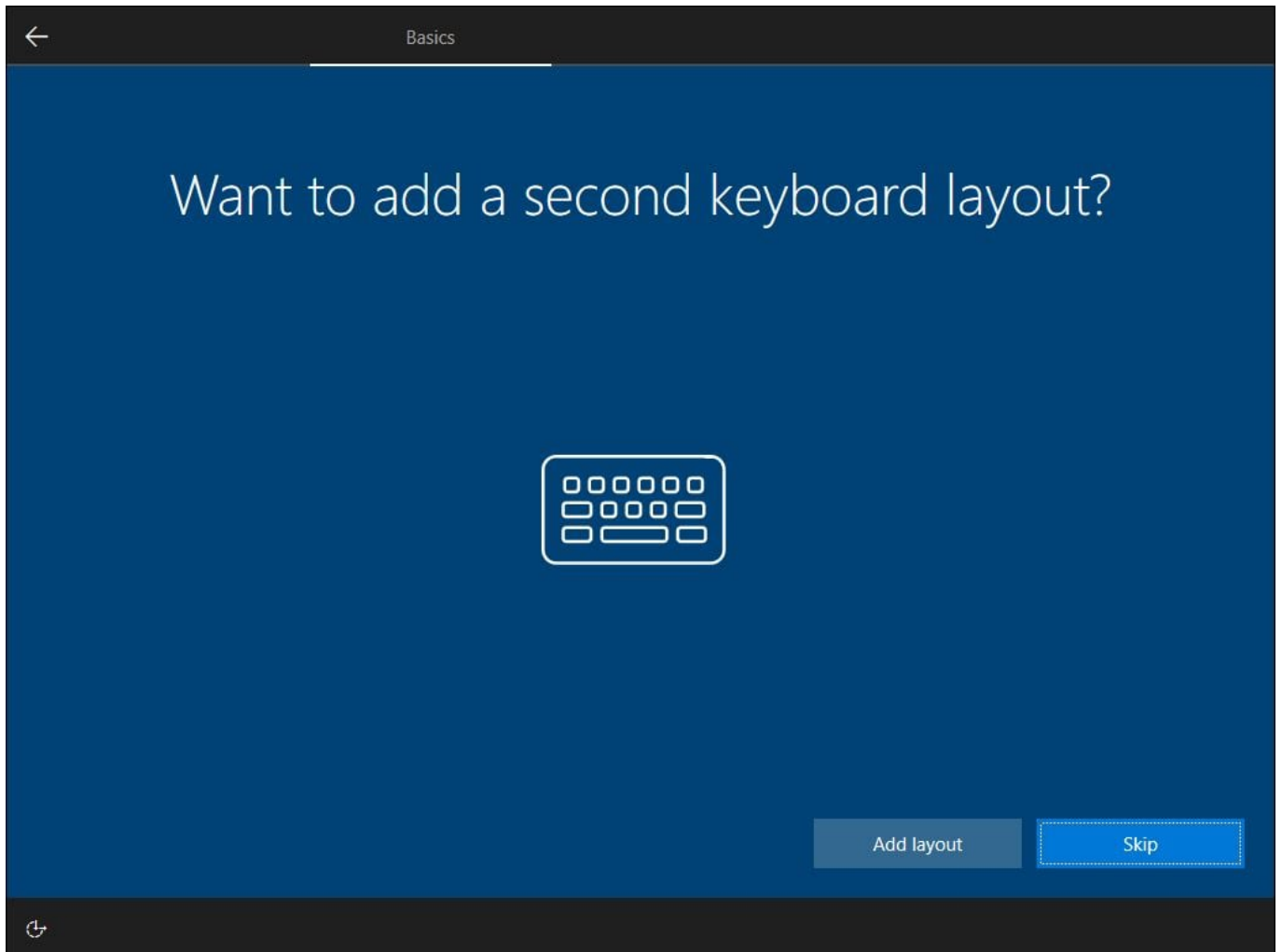
If you also use another keyboard layout, you can add that next.

- US
- Canadian Multilingual Standard
- English (India)
- Irish
- Scottish Gaelic
- United Kingdom
- United States-Dvorak

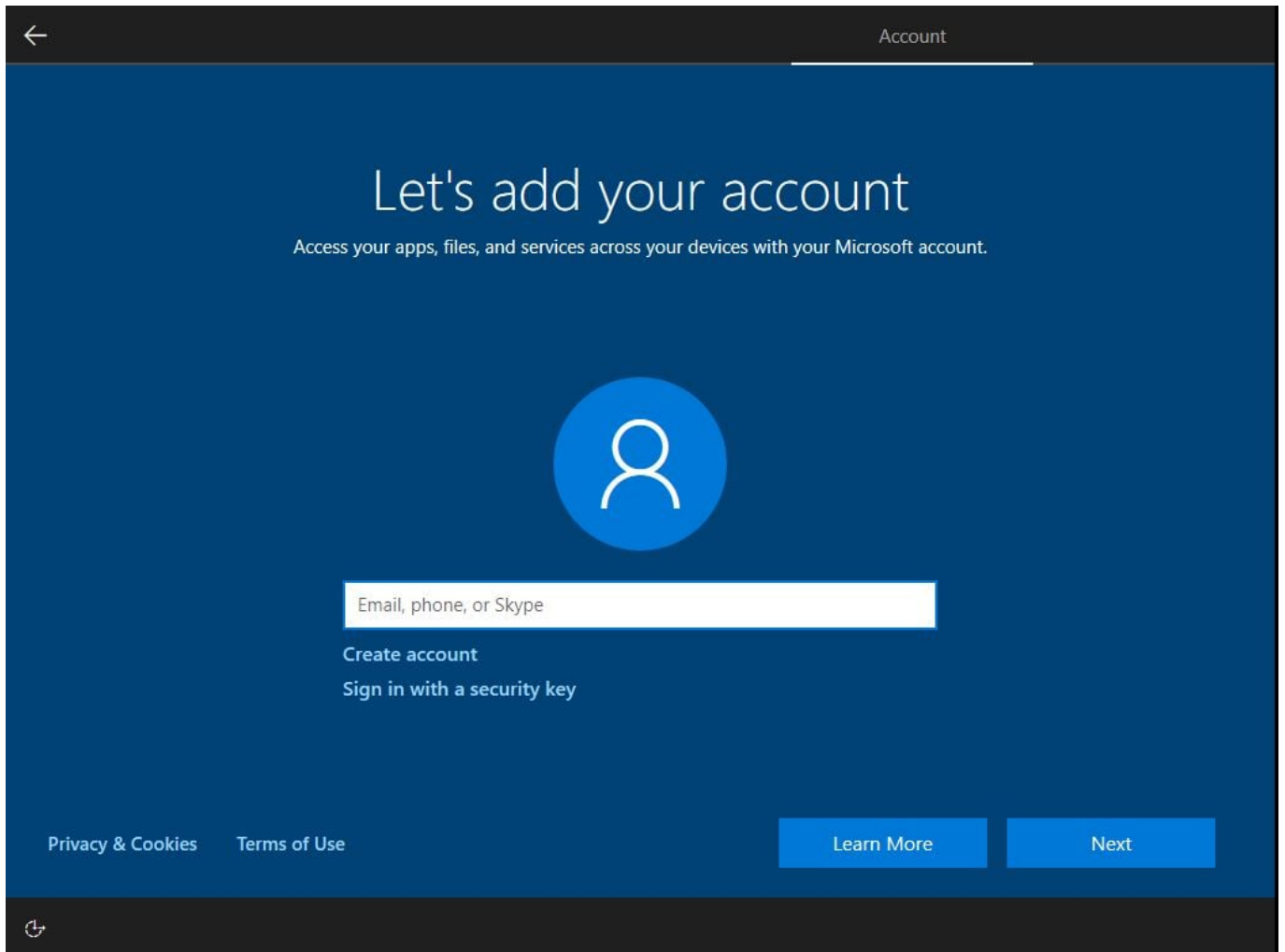
Yes



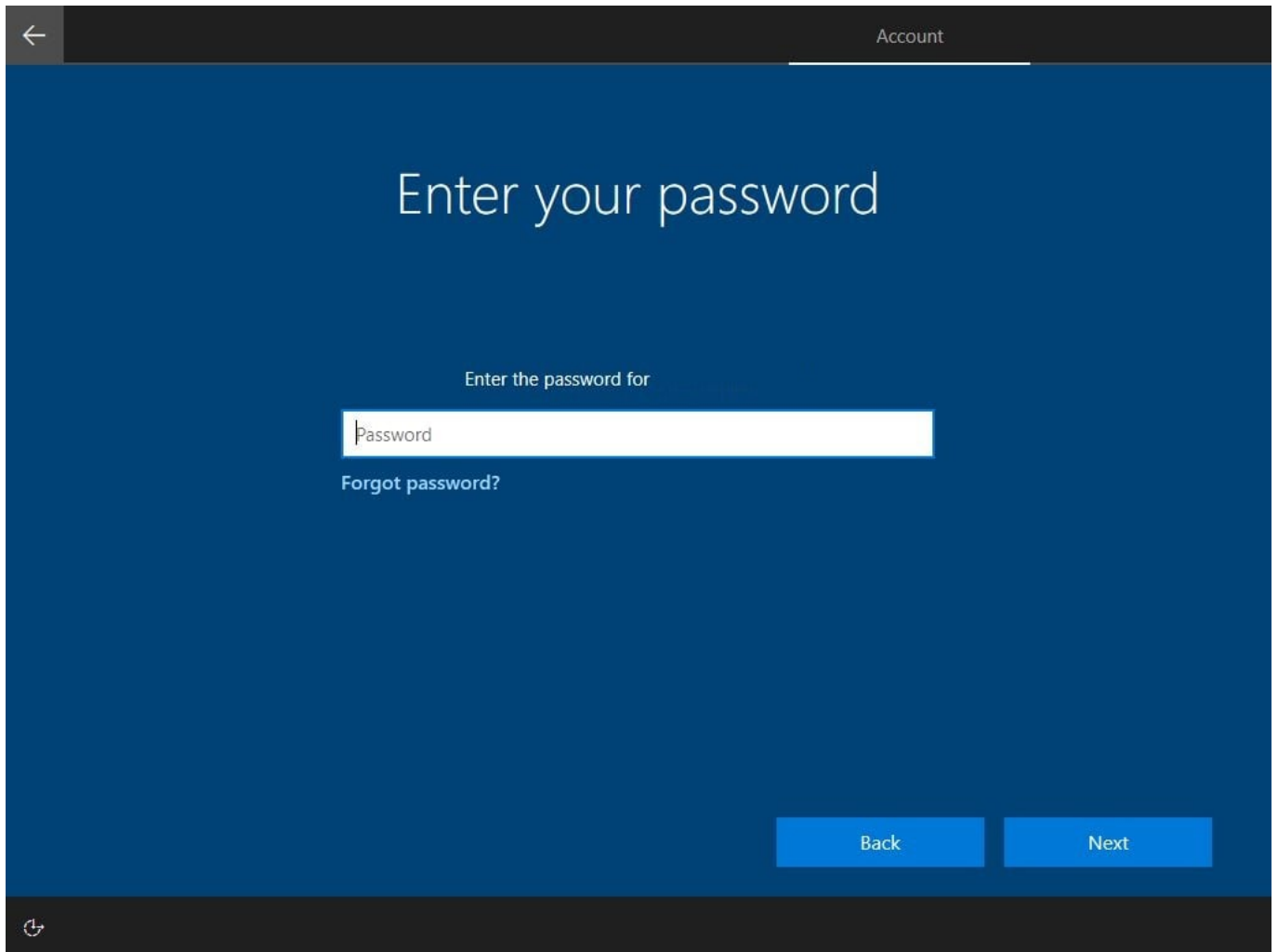
13. If you want to select a second keyboard layout you can do it now, if not click "Skip".



14. Now the installer will ask you to sign in to your Microsoft account.



15. Enter the password to your Microsoft account.



16. Click "Create PIN" you will be able to use it as an administrator's password for your computer.

Create a PIN

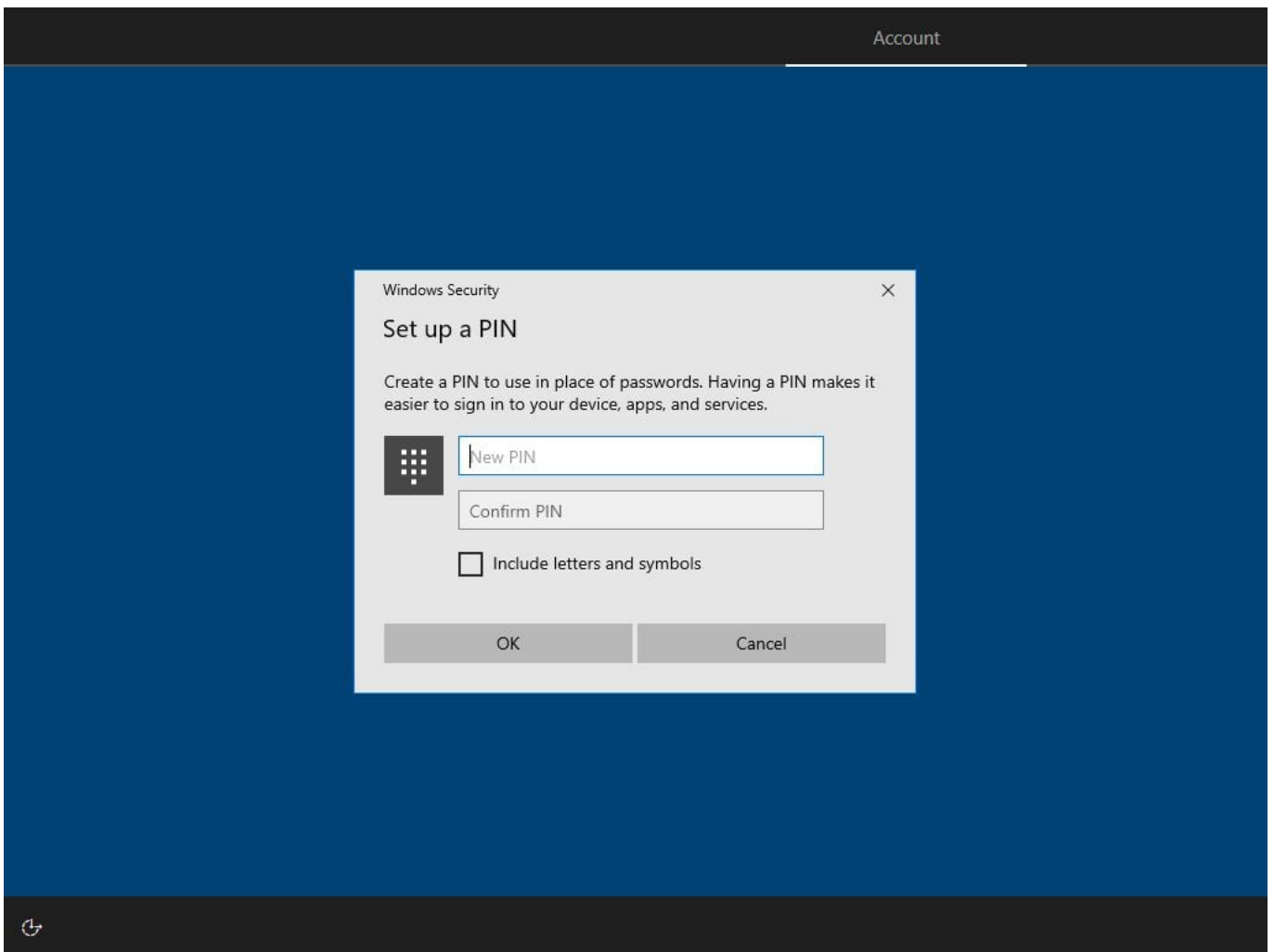
What takes seconds to create and gives you fast and secure sign-in? A Windows Hello PIN! It only works on your device, so it stays off the web.



Create PIN



17. Create a PIN.



18. Choose privacy settings.

Choose privacy settings for your device

Microsoft puts you in control of your privacy. Choose your settings, then select 'Accept' to save them. You can change these settings at any time.

Online speech recognition

Use your voice for dictation and to talk to Cortana and other apps that use Windows cloud-based speech recognition. Send Microsoft your voice data to help improve our speech services.

Yes

Find my device

Turn on Find my device and use your device's location data to help you find your device if you lose it. You must sign in to Windows with your Microsoft account to use this feature.

Yes

Inking & typing

Send optional inking and typing diagnostic data to Microsoft to improve the language recognition and suggestion capabilities of apps and services running on Windows.

Yes

Location

Get location-based experiences like directions and weather. Let Windows and apps request your location and allow Microsoft to use your location data to improve location services.

Yes

Diagnostic data

Send info about the websites you browse and how you use apps and features, plus additional info about device health, device activity, and enhanced error reporting. Required diagnostic data will always be included when you choose to send Optional diagnostic data.

Send Required and Optional diagnostic data

Tailored experiences

Let Microsoft use your diagnostic data, excluding information about websites you browse, to offer you personalized tips, ads, and recommendations to enhance your Microsoft experiences.

Yes

[Learn more](#)

[Accept](#)



19. Customize device. You can set it up later by clicking on "Skip"

Customize your device

Select all the ways you plan to use your device. If you choose to tell Microsoft how you plan to use your device, we'll customize suggestions for tools and services during device setup and your welcome experiences.



Gaming

Play and discover games, keep up with new releases



Schoolwork

Take notes, write essays, and collaborate on projects



Creativity

Bring ideas to life—from novels and presentations to photos and videos



Entertainment

Watch videos, browse the web, and connect on social media



Family

Connect with the whole family, edit safety settings, and give everyone their own profile on this device



Business

Track expenses, manage customers, and run your business



Learn more

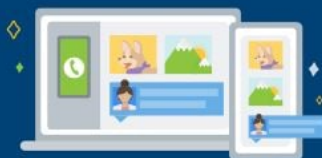
Skip

Accept



20. Link your phone. You can set it up later by clicking on “Skip for now”

Use your phone from your PC



Make and take calls

Leave your phone in your pocket when it rings—answer from your PC.



Send text messages

Use your PC's keyboard and larger screen to keep up with the conversation.



Use your mobile apps

Browse, play, order, chat, and more with instant access to your mobile apps from your PC.

After you finish setting up your PC, you'll be asked to set up a companion app on your phone.

Skip for now

Remind me later



21. Cloud backups. You can set it up later by clicking on "Only save files to this PC"



Back up your files with OneDrive



Use your device with peace of mind. Your Desktop, Documents, and Pictures folders on this device will be backed up in your OneDrive, so they're protected and available on any device, anywhere.

[Only save files to this PC](#) [Privacy](#)

[Next](#)



22. Microsoft 365 subscription offer. You can set it up later by clicking on "No, thanks"



Make the most of your 365 with a free Microsoft 365 trial



- ✓ Get a creative boost with smart assistance features in Word, Excel, and PowerPoint.
- ✓ Share one convenient subscription with up to 5 other people.
- ✓ Keep your stuff secure with 1 TB of OneDrive cloud storage per person.
- ✓ Save time and focus on what matters with one secure email and calendar app from Outlook.

You'll need a credit card to start your 1-month trial. After that, Microsoft 365 Family is \$99.99 plus applicable taxes per year. Cancel anytime to stop future charges by visiting your Microsoft account.

[I have a product key](#)

[No, thanks](#)

[Try for free](#)



23. Gamers' offer. You can set it up later by clicking on "No thanks"



Discover your next favorite game

Get your first month of Xbox Game Pass for PC for \$1.00



Enjoy access to over 100 high-quality PC games on Windows 10, with new games and Xbox Game Studios titles added all the time.

After your first month, subscription continues at the regular price (\$9.99 plus taxes per month), unless cancelled. Cancel any time to stop future charges. You'll be notified before any price changes.

[Terms and Conditions](#)

No thanks

Join for \$1.00



24. Enable/disable Cortana. You can set it up later by clicking on "Not now"

Let Cortana help you get things done

To do this, Cortana needs access to some of your personal information



To let Cortana provide personalized experiences and relevant suggestions, Microsoft collects and uses information including your location and location history, contacts, voice input, speech and handwriting patterns, typing history, search history, calendar details, content and communication history from Microsoft services, messages and apps. In Microsoft Edge, Cortana uses your browsing history. You can always change these choices in the Notebook and disable Cortana in Microsoft Edge.

[Learn more](#)[Not now](#)[Accept](#)

25. All set! Congratulations

This might take several minutes

Don't turn off your PC